

The Plymouth logo consists of the word "Plymouth" in a white, bold, sans-serif font, centered within a red rectangular box with thin white horizontal lines above and below the text.

plymouthrubber.com

The image shows several rolls of Plytack Professional Masking Tape in various colors: green, blue, and purple. The rolls are arranged in a stack, with some partially unrolled to show the adhesive side. The background is white with colorful abstract shapes in shades of teal, yellow, and purple.

A wide range of vinyl masking tape options for professional use.

Easy application, clean removal and excellent adhesion to guarantee the top quality finish you need.



FINE LINE

Excellent conformability makes this selection the best option for perfect adaptability to uneven surfaces and tight contours

PLYTACK 3514 FINE LINE REF. NO. 8480

Key Features Outstanding Conformability

Especially recommended for Design Masking

Standard color Violet **Temp. Resistance** 150°C / 302°F



PLYTACK 3512 FINE LINE REF. NO. 8460

Key Features Outstanding Conformability

Especially recommended for Design Masking

Standard color Sky Blue **Temp. Resistance** 150°C / 302°F

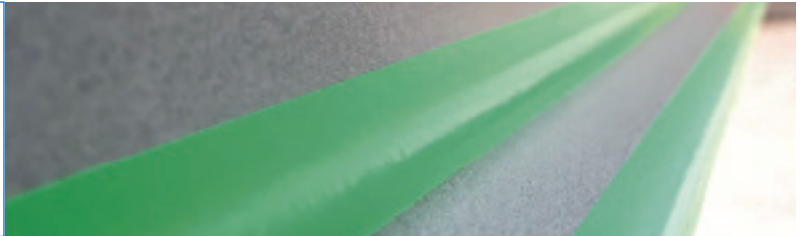


PLYTACK 3415 FINE LINE REF. NO. 8440

Key Features Excellent conformability
Contour adaptability

Especially recommended for Multisurface Masking in
Automotive Industry

Standard color Pale Green **Temp. Resistance** 150°C / 302°F



PLYTACK 3413 FINE LINE REF. NO. 8430

Key Features Excellent conformability
Contour adaptability

Especially recommended for Multisurface Masking in
Automotive Industry

Standard color Lime Green **Temp. Resistance** 150°C / 302°F

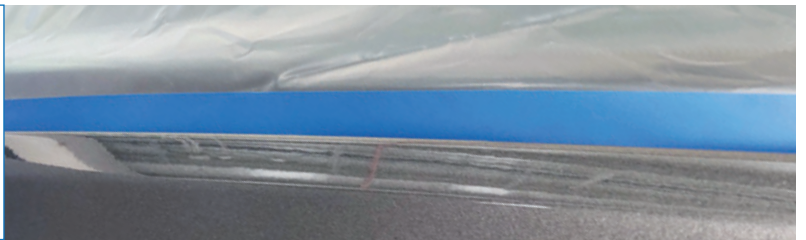


PLYTACK 3315 FINE LINE REF. NO. 8420

Key Features High Conformability
Lifting Resistance

Especially recommended for Straight & Curved Sharp Paint Lines
Two Tone
Fascia Panels

Standard color Dark Blue **Temp. Resistance** 150°C / 302°F



PLYTACK 3313 FINE LINE REF. NO. 8410

Key Features High Conformability
Lifting Resistance

Especially recommended for Straight & Curved Sharp Paint Lines
Two Tone
Fascia Panels

Standard color Orange **Temp. Resistance** 150°C / 302°F



PLYTACK 3310 FINE LINE REF. NO. 8400

Key Features High Conformability
Lifting Resistance

Especially recommended for Straight & Curved Sharp Paint Lines
Two Tone
Fascia Panels

Standard color Red **Temp. Resistance** 150°C / 302°F





EDGE

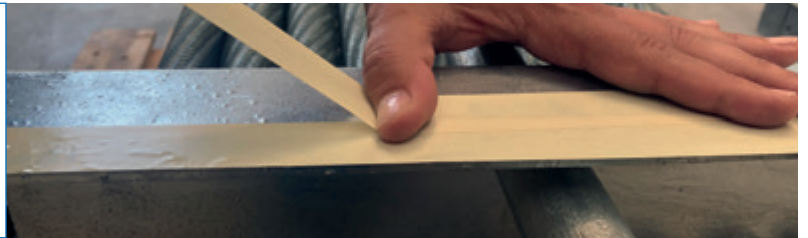
This selection offers the sharpest possible paint lines and the great edge lifting resistance needed in top quality paint works

PLYTACK 3218 EDGE REF. NO. 8550

Key Features Chemical & Abrasion Resistance

Especially recommended for Electroplating

Standard color Ivory White **Temp. Resistance** 150°C / 302°F



PLYTACK 3214 EDGE REF. NO. 8530

Key Features Edge Lifting Resistance
Balanced Conformability

Especially recommended for Two Tone Car Body Masking
Long Straight Lines

Standard color Capri Blue **Temp. Resistance** 150°C / 302°F



PLYTACK 1214 EDGE REF. NO. 8520

Key Features High Durability
Abrasion Resistance

Especially recommended for Surface Protection
Floor Marking

Standard color Light Blue **Temp. Resistance** 90°C / 194°F



PLYTACK 2211 EDGE REF. NO. 8500

Key Features Edge Lifting Resistance
Balanced Conformability

Especially recommended for Sharp Paint Lines
Surface Protection

Standard color Yellow **Temp. Resistance** 120°C / 248°F



EASY TEAR

This tape allows easy hand tearing and soft unwinding for a great performance in multiple applications

PLYTACK 3111 EASY TEAR REF. NO. 8600

Key Features Easy Hand Tearing
Minimum shrinkage
Edge Lifting Resistance

Especially recommended for Two Tone Car Body and bumper masking

Standard color Olive Green **Temp. Resistance** 150°C / 302°F



PLYTACK 4111 EASY TEAR REF. NO. 8610

Key Features 160°C temperature resistance
Easy hand tearing
Minimum shrinkage

Especially recommended for Two Tone Car Body and bumper masking

Standard color Sand **Temp. Resistance** 160°C / 320°F








WHICH PLYTACK TAPE SUITS YOUR NEEDS BEST?

PLYTACK FINELINE

PLYTACK EDGE

PLYTACK EASY TEAR

		ATTRIBUTES						APPLICATIONS									
		Thickness	Conformability	Clean removal	No ghosting	Temperature resistance (1 hour)	Edge Lifting Resistance	Tearing	Sharp Paint Lines	Two tone painting	Autom. Fascia	Car bumper masking	Design masking	Final repair	Surface protection	Floor/Surface Marking	Electroplating
	Plytack 3514 Fine Line Especially designed for artistic masking, this vinyl masking tape offers outstanding conformability and plyability for all kinds of designs with curved edges, while keeping all technical properties to ensure correct durability and resistance.	0,14mm 5.5 mils	●●●●	✓	✓	150°C 302°F	●●●	●●●	●●●	●●	●●	●●	●●●●	●●●	●●	●●	●
	Plytack 3512 Fine Line Especially designed for artistic masking and with a thin profile, this vinyl masking tape offers outstanding conformability and plyability for all kinds of designs with curved edges, while keeping all technical properties to ensure correct durability and resistance.	0,12mm 4.7 mils	●●●●	✓	✓	150°C 302°F	●●●	●●●	●●●	●●	●●	●●	●●●●	●●●	●●	●●	●
	Plytack 3415 Fine Line Excellent conformability and a flexible backing make this masking vinyl tape perfect for works with difficult contours and tight radius bends. Easier to apply due to its adaptability, stretching and adherence to uneven surfaces.	0,15mm 5.9 mils	●●●●	✓	✓	150°C 302°F	●●●	●●●	●●●	●●●●	●●●	●●●●	●●●●	●●	●●	●●	
	Plytack 3413 Fine Line Excellent conformability and a thin flexible backing make this masking vinyl tape perfect for works with difficult contours and tight radius bends. Easier to apply due to its adaptability, stretching and adherence to uneven surfaces.	0,13mm 5.1 mils	●●●●	✓	✓	150°C 302°F	●●●	●●●●	●●●	●●●	●●●●	●●●	●●●●	●●	●●	●●	●
	Plytack 3315 Fine Line Highly conformable vinyl masking tape specially adaptable to uneven or multidimensional surfaces. Leaves a clean, sharp edge making it ideal for a wide range of painting applications.	0,15mm 5.9 mils	●●●	✓	✓	150°C 302°F	●●●●	●●●	●●●●	●●●●	●●●	●●●	●●●	●●●	●●●	●●●	●
	Plytack 3313 Fine Line Thin and highly conformable vinyl masking tape specially adaptable to uneven or multidimensional surfaces. Leaves a clean, sharp edge even in curved applications, making it ideal for a wide range of painting processes.	0,13mm 5.1 mils	●●●	✓	✓	150°C 302°F	●●●●	●●●	●●●	●●●●	●●●●	●●●	●●●	●●●	●●	●●	●
	Plytack 3310 Fine Line Its very low thickness allows this vinyl masking tape very good conformability and adaptability in uneven, convex or multidimensional surfaces and tight curves.	0,10mm 3.9 mils	●●●●	✓	✓	150°C 302°F	●●●●	●●●	●●●	●●●●	●●●	●●	●●●	●●	●●	●●	●
	Plytack 3218 Edge Abrasion resistant vinyl masking tape with good conformability specially formulated for use during electroplating and other chemical processes (involving substances like oil, acids, alkalines, ...)	0,18mm 7.1 mils	●●●	✓	✓	150°C 302°F	●●●●	●●	●●●	●●	●	●●	●	●●	●●●●	●●	●●●●
	Plytack 3214 Edge Good conformability and high resistance to edge lifting on high temperature applications make this vinyl masking tape perfect for painting works where very sharp paint lines, curved or straight, are needed.	0,14mm 5.5 mils	●●●	✓	✓	150°C 302°F	●●●●	●●●	●●●●	●●●●	●●●●	●●●	●●	●●	●●●●	●●●●	●●
	Plytack 1214 Edge Good conformability and high resistance to edge lifting make this vinyl masking tape perfect for painting works where very sharp paint lines, curved or even long straight lines, are needed.	0,14mm 5.5 mils	●●●	✓	✓	90°C 194°F	●●●●	●●●	●●●●	●●●●	●●●●	●●●	●●	●●	●●●●	●●●●	●●
	Plytack 2211 Edge Lower thickness, together with good conformability and high resistance to edge lifting, confers this vinyl masking tape special adaptability to multidimensional surfaces, making it perfect for tight and narrow shapes.	0,11mm 4.3 mils	●●●	✓	✓	120°C 248°F	●●●●	●●●	●●●●	●●●●	●●●●	●●●	●●●	●●	●●●	●●●	●●
	Plytack 3111 Easy Tear Easiest possible tearing on a vinyl masking tape makes the application process more efficient. Perfectly adaptable to a wide range of painting applications due to its conformability and excellent resistance to edge lifting.	0,11mm 4.3 mils	●●●	✓	✓	150°C 302°F	●●●●	●●●●	●●●●	●●●●	●●●●	●●●	●●	●●●	●●●	●●	●●
	Plytack 4111 Easy Tear Highest temperature resistance and easiest possible hand tearing for an efficient application process and adaptability to a wide range of painting applications.	0,11mm 4.3 mils	●●●	✓	✓	160°C 320°F	●●●●	●●●●	●●●●	●●●●	●●●●	●●●	●●	●●●	●●●	●●	●●

Available under request: Alternative Colors · Translucent Options · Lined Products

Plymouth

plymouthrubber.com



HEAD OFFICE AND FACTORIES:

CTRA. SALCEDA, KM. 1,5
36400 PORRIÑO SPAIN
(+34) 986 330 562
INFO@PLYMOUTH RUBBER.COM

USA COMMERCIAL OFFICE:

960 TURNPIKE STREET, SUITE 2A
CANTON, MASSACHUSETTS
1 - 800 - 458 - 0336
INFO-USA@PLYMOUTH RUBBER.COM



GPMK-0222